

Jerusalem,  
June 29. 1894.

No. 38.

Sir,  
I have had the honour  
to receive Your Excellency's  
Despatch of the 28<sup>th</sup> of March  
last, enclosing Copy of a Note  
Verbale from the Sublime Porte  
on the subject of the proposed  
Hospital of the Church Missionary  
Society at Gaza, and stating  
His Excellency that  
The Right Hon<sup>ble</sup>  
Sir Philip Currie, G.C.B.  
&c. &c. &c.

*[Faint, illegible handwriting]*

En route Jerusalem  
The Rev. A. Mason.  
Jerusalem, Feb 12. 1894  
Transfers have taken  
place but the land has  
been withheld as usual.  
In No. 4  
Mr. Ernest Dickson  
Desk. No. 37 of June 26.  
1894

*[Faint, illegible handwriting]*

118  
that Your Excellency would be glad to know if the site chosen by the Society is such as described, and what communications had passed between the Mutessarif and myself on the subject.

In reply I beg to state that I at once communicated the contents of the Note Verbale above referred to, to the Rev. J. R. Longley Hall, Secretary in Palestine of the Church Missionary Society, asking him to furnish me with

119  
with a report on the matter. Not having received a reply from him I again wrote to him, on the 29<sup>th</sup> ultimo, on the subject, and I have now the honour to enclose herewith a copy of a letter and of a ground plan which I have received from him, giving certain details respecting the Hospital and the Church Missionary Society's Property at Gaza.

Mr. Hall states that the Hospital is situated at a distance of

June 23. 1894

of 25 yards from the Tomb of  
Sheikh Abdallah (according to  
Mohammedan tradition the Ethiopian  
eunuch who was baptised by the  
Apostle Philip), and about 106 yards  
from the Mosque Kiatib. ul. Evlia.

I have the honour to add  
that beyond what was reported  
in my Despatch N<sup>o</sup> 16 of the  
28<sup>th</sup> of February last, no  
communications on the subject  
passed between the Mutessarif  
and myself, the Church Missionary  
Society

Society not having requested  
my intervention in the  
matter.

I have the honour to be,  
With the highest respect,

Sir,

Your Excellency's most obedient,  
humble servant

John Dickson.

C. M. S.  
Jerusalem,  
June 23. 1894.

Copy

My dear Mr. Dickson,

On my return home last Monday I found your letter of May 29<sup>th</sup> & was very sorry to see that you had not rec<sup>d</sup>. from Dr. Sterling the report &c. with ref. to the Gaza Dispensary.

I at once telegraphed Dr. Sterling to send the information needed immediately, & I am glad to say that I have now received it & enclose the ground plan &c.

John Dickson Esq.  
H. B. M's Council  
\* \* \*

OSI

530-00E

See Mr. Mammistoll's M<sup>o</sup> 27/4  
of July 21/94

*For Mammistoll*

R. Langley Hall Survey District  
No. 5.  
- containing copy of a letter  
in a place from the Rev. J.  
Langley Hall Survey District  
No. 5.  
No. 38  
2 hours.  
By Mr. J. L. G.  
No. 4. Post. 9 Oct. 25/94

Disputed Hospital at Gaza

of the C.M.S. property at Gaza.

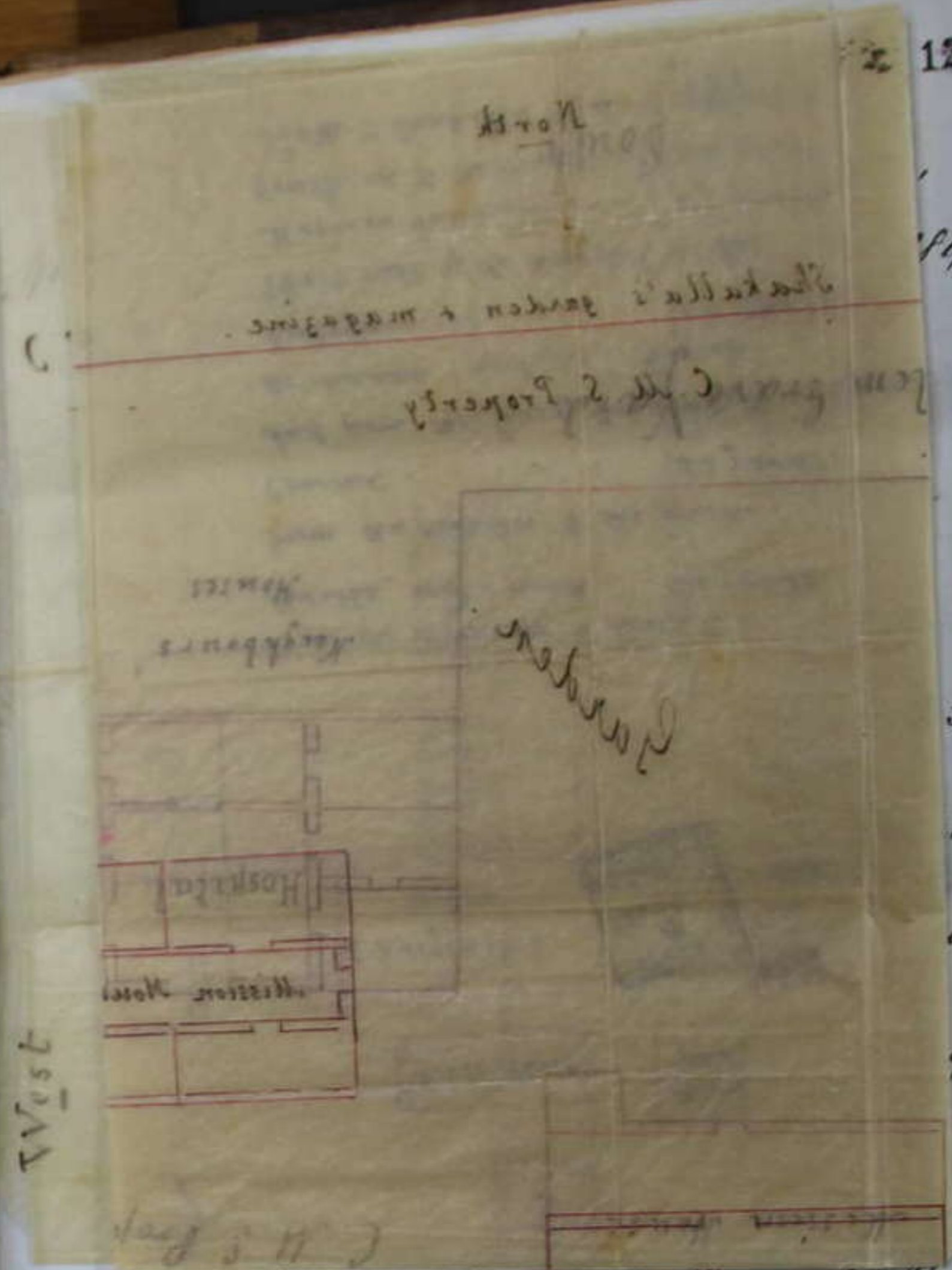
The Weli of "Sheikh Abdullah" is marked in ink.

The Hospital was started in 1885 by Rev. J. Dowell with six beds.

About 100 patients are seen in the Dispensary every day, and frequently Moslem Pilgrims are brought from the Mosques.

"Sheikh Abdullah" is 25 yards from the Hospital, & the Hospital is about 106 yards from the Mosque. Believe me &c.

(Signed) J. R. Longley Hall



West

life of Monsieur Carnot, President of the French Republic, that he

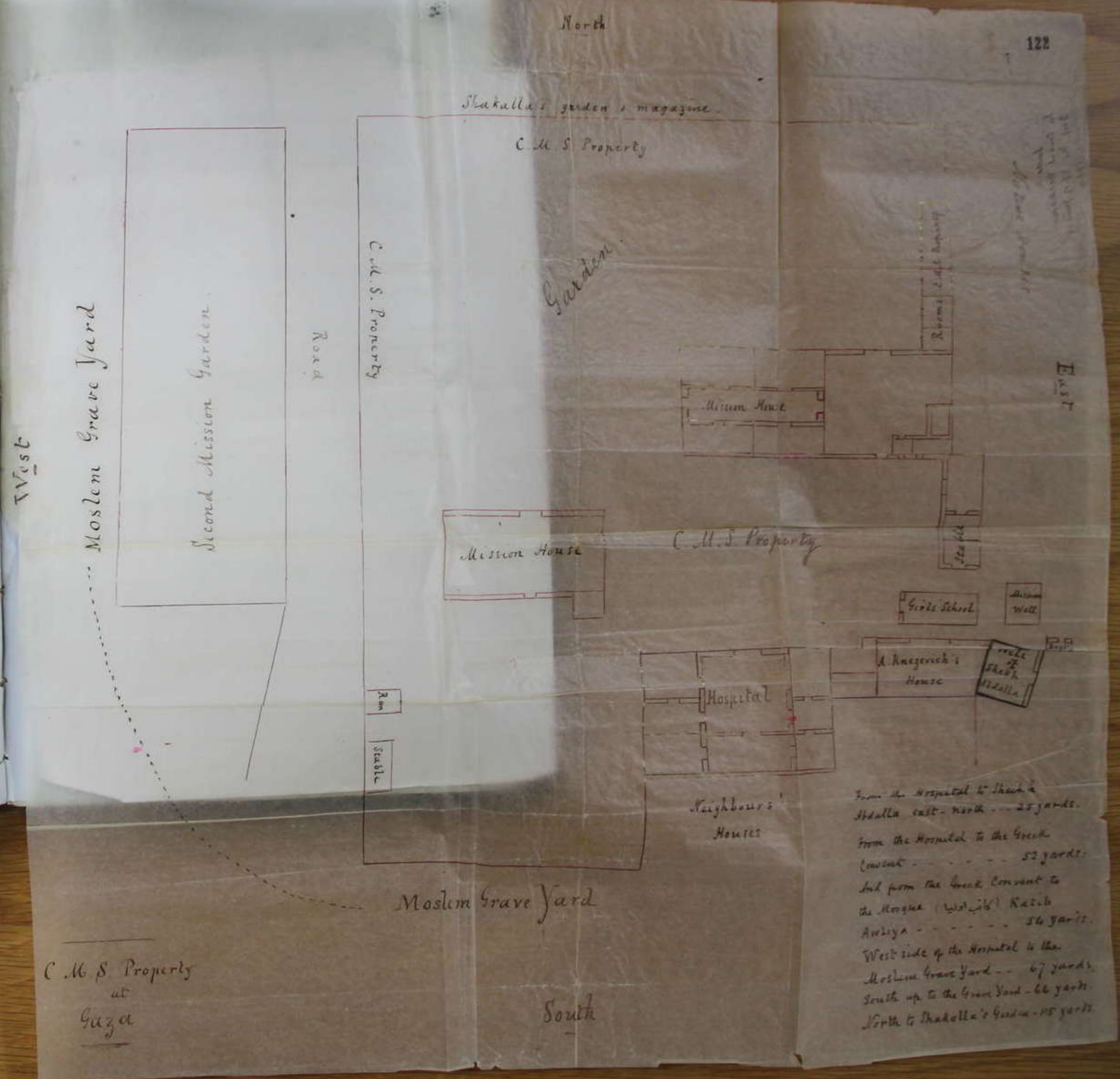
His Excellency had  
The Right Hon<sup>ble</sup>  
Sir Philip Currie, G.C.B.  
&c. &c. &c.

of the C.M.S. property at Gaza.  
 The Weli of "Sheikh Abdullah"  
 is marked in ink.

The Hospital was started in  
 1885 by Rev. J. Dowell with six  
 beds.

About 100 patients are seen in  
 the Dispensary every day, and  
 frequently Moslem Pilgrims are  
 brought from the Mosques.

"Sheikh Abdullah" is 25 yards  
 from the Hospital, & the Hospital  
 is about 106 yards from the  
 Mosque. Believe me &c.  
 (Signed) J. R. Longley Hall

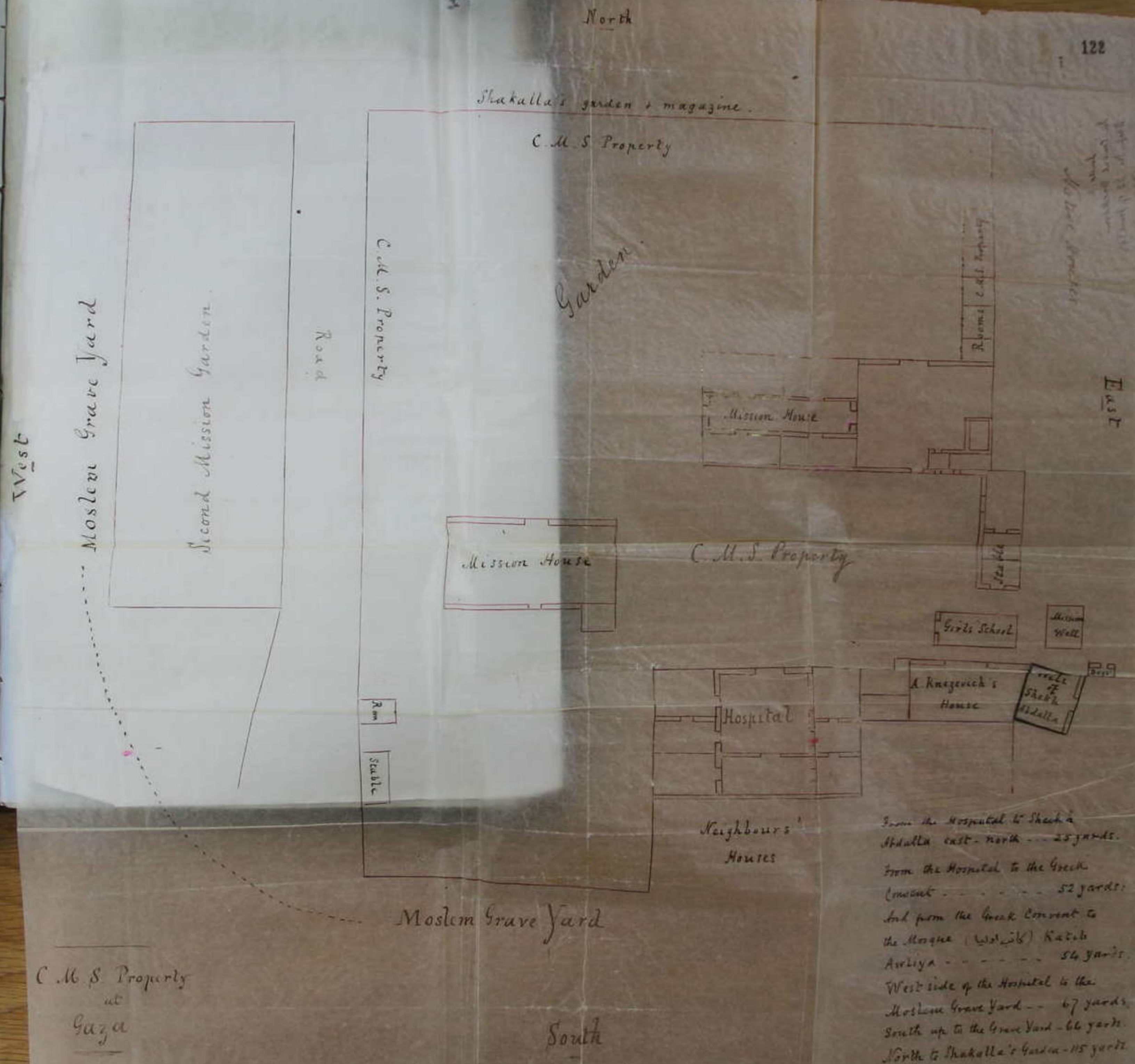


M.S. property at Gaza.  
 of Sheikh Abdullah  
 in ink.

Hospital was started in  
 Rev. J. Dowell with six  
 100 patients are seen in  
 every day, and  
 Moslem Pilgrims are  
 from the Mosques.

"Abdullah" is 25 yards  
 Hospital, & the Hospital  
 106 yards from the

Believe me &c.  
 (signed) J. R. Longley Hall



From the Hospital to Sheikh  
 Abdulla east-north - 25 yards.  
 From the Hospital to the Greek  
 Convent - 52 yards.  
 And from the Greek Convent to  
 the Mosque (Kutub) Kutub  
 Avliya - 54 yards.  
 West side of the Hospital is the  
 Moslem Grave Yard - 67 yards.  
 South up to the Grave Yard - 66 yards.  
 North to Shakalla's Garden - 115 yards.

C.M.S. Property  
 at  
 Gaza

M.S. property at Gaza.  
 li of Sheikh Abdullah  
 in ink.

Hospital was started in  
 Rev. J. Dowell with six  
 100 patients are seen in  
 sary every day, and  
 Moslem Pilgrims are  
 from the Mosques.

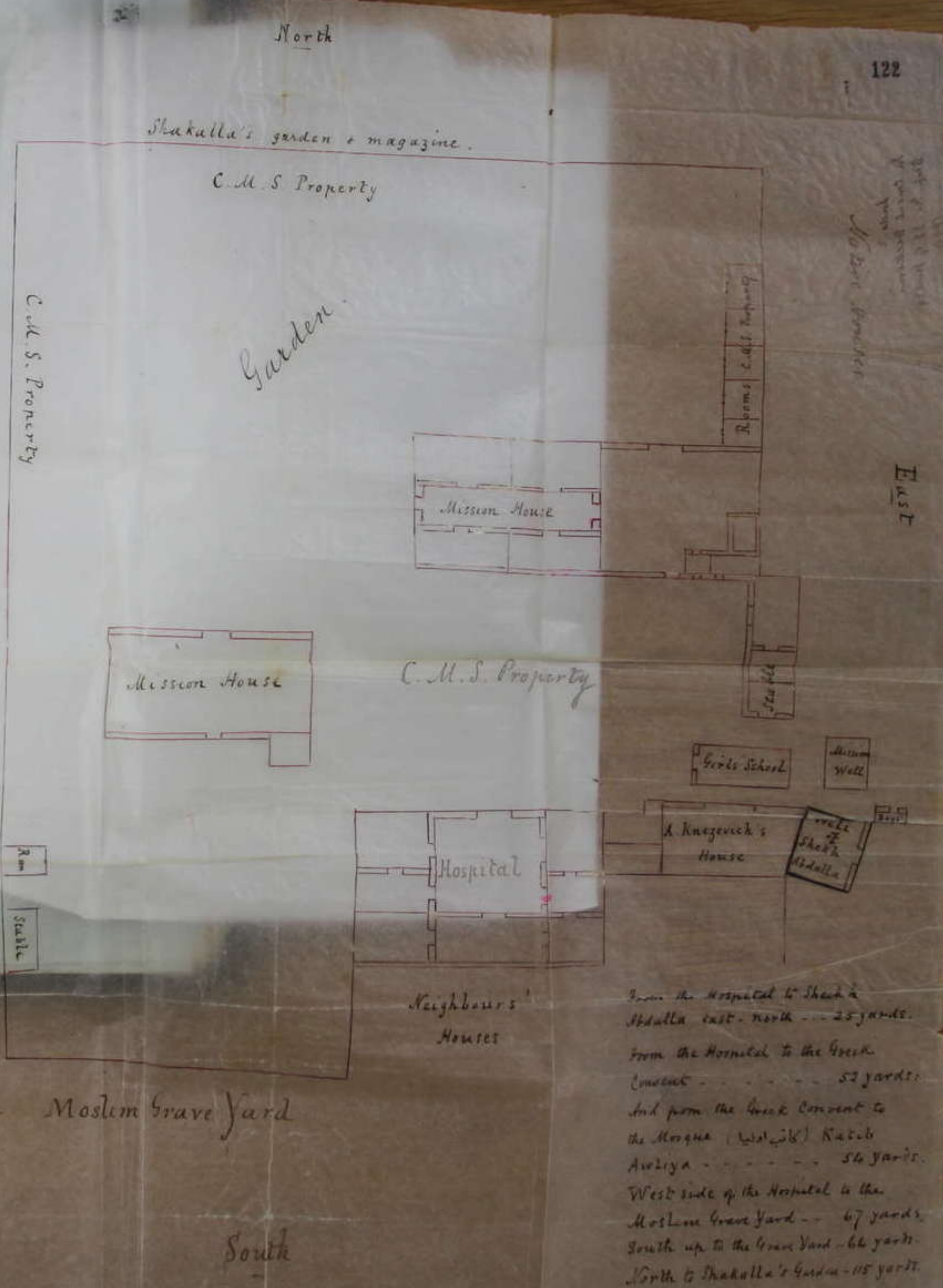
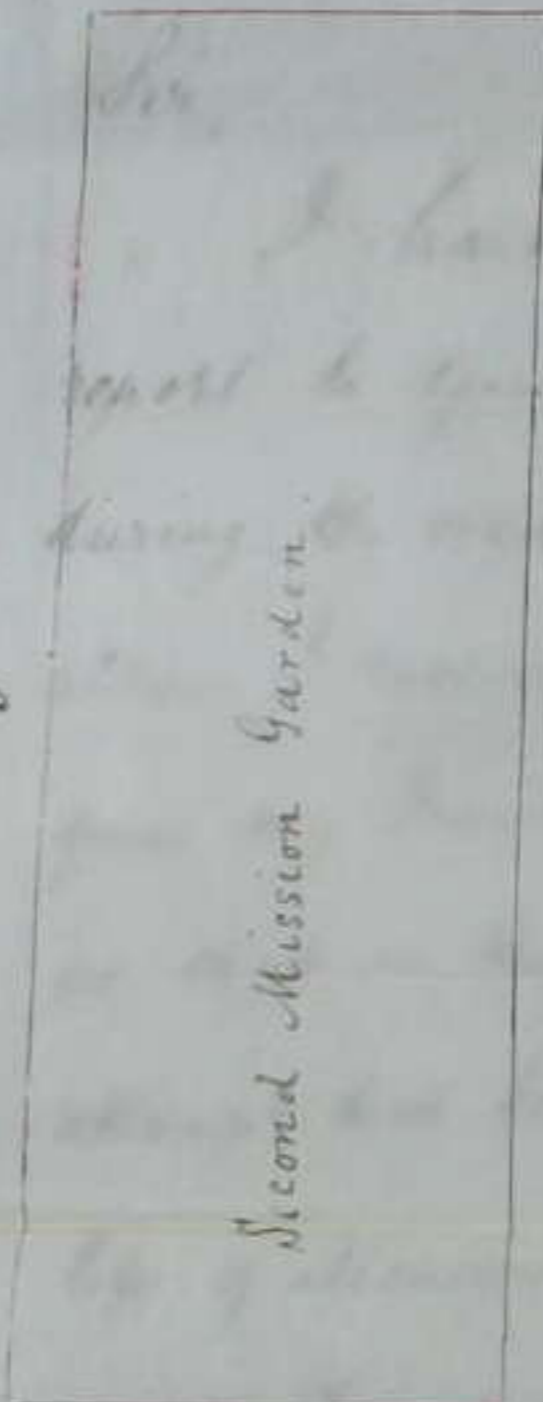
"Abdullah" is 25 yards  
 Hospital, & the Hospital  
 106 yards from the

Believe me &c.  
 (signed) J. R. Longley Hall

1139

West

Moslem Grave Yard



North

122

Shakulla's garden & magazine.

C.M.S. Property

Garden

C.M.S. Property

Road

Mission House

Mission House

C.M.S. Property

Girls School

Well

Hospital

A Knezevich's House

Stable

Neighbours' Houses

Moslem Grave Yard

C.M.S. Property  
 at  
 Gaza

South

From the Hospital to Sheikh  
 Abdulla east-north - 25 yards.  
 From the Hospital to the Greek  
 Convent - 52 yards.  
 And from the Greek Convent to  
 the Mosque (Kutub) Kutub  
 Avliya - 56 yards.  
 West side of the Hospital to the  
 Moslem Grave Yard - 67 yards.  
 South up to the Grave Yard - 66 yards.  
 North to Shakulla's Garden - 115 yards.

M.S. property at Gaza.  
 of Sheikh Abdullah  
 in ink.

Hospital was started in  
 Rev. J. Howell with six  
 100 patients are seen in  
 every day, and  
 Moslem Pilgrims are  
 from the Mosques.

"Abdullah" is 25 yards  
 Hospital, & the Hospital  
 106 yards from the

Believe me &c.  
 (signed) J. R. Longley Hall

1139

West

Moslem Grave Yard



C.M.S. Property  
 at  
 Gaza

South

North

122

Shakalla's garden & magazine.

C.M.S. Property

Garden

C.M.S. Property

Road

Second Mission Garden

Mission House

Mission House

C.M.S. Property

Rooms C.M.S. Property

East

Girls' School

Mission Well

A Knezevich's House

Well of Sheikh Abdalla

Hospital

Neighbours' Houses

Moslem Grave Yard

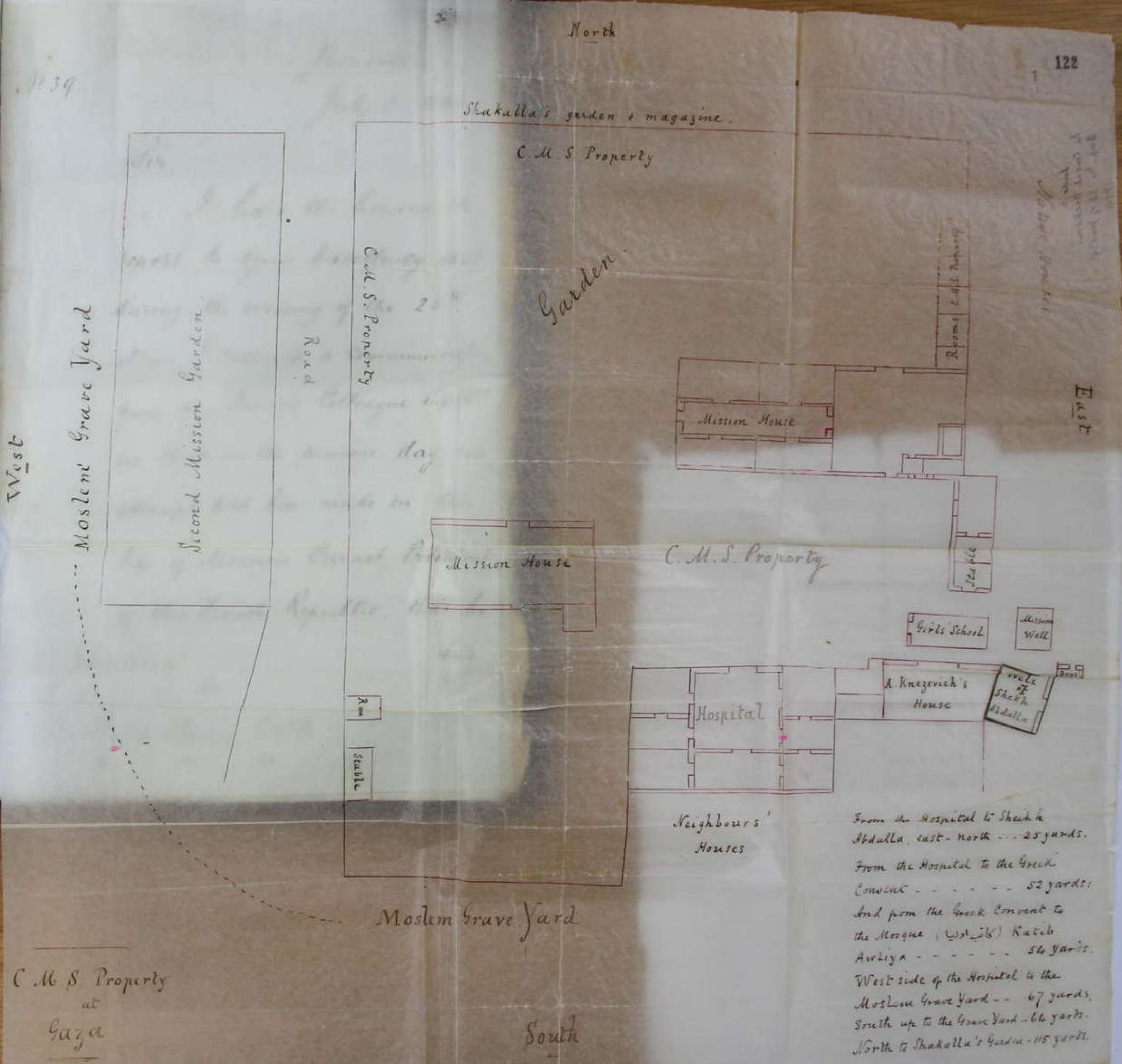
From the Hospital to Sheikh  
 Abdalla east-north - 25 yards.  
 From the Hospital to the Greek  
 Convent - 52 yards.  
 And from the Greek Convent to  
 the Mosque (west side) Katib  
 Avliya - 56 yards.  
 West side of the Hospital to the  
 Moslem Grave Yard - 67 yards.  
 South up to the Grave Yard - 66 yards.  
 North to Shakalla's Garden - 115 yards.

M. S. property at Gaza.  
 eli of Sheikh Abdullah  
 in ink.

Hospital was started in  
 Rev. J. Howell with six  
 100 patients are seen in  
 sary every day, and  
 Moslem Pilgrims are  
 from the Mosques.

"Abdullah" is 25 yards  
 Hospital, & the Hospital  
 106 yards from the

Believe me &c.  
 (signed) J. R. Longley Hall



From the Hospital to Sheikh  
 Abdulla east-north --- 25 yards.  
 From the Hospital to the Greek  
 Convent - - - - - 52 yards.  
 And from the Greek Convent to  
 the Mosque (مسجد) Katic  
 Avliya - - - - - 54 yards.  
 West side of the Hospital to the  
 Moslem Grave Yard - - 67 yards.  
 South up to the Grave Yard - 64 yards.  
 North to Shakulla's Garden - 115 yards.

M.S. property at Gaza.  
 of Sheikh Abdullah  
 in ink.

Hospital was started in  
 Rev. J. Howell with six  
 100 patients are seen in  
 every day, and  
 Moslem Pilgrims are  
 from the Mosques.

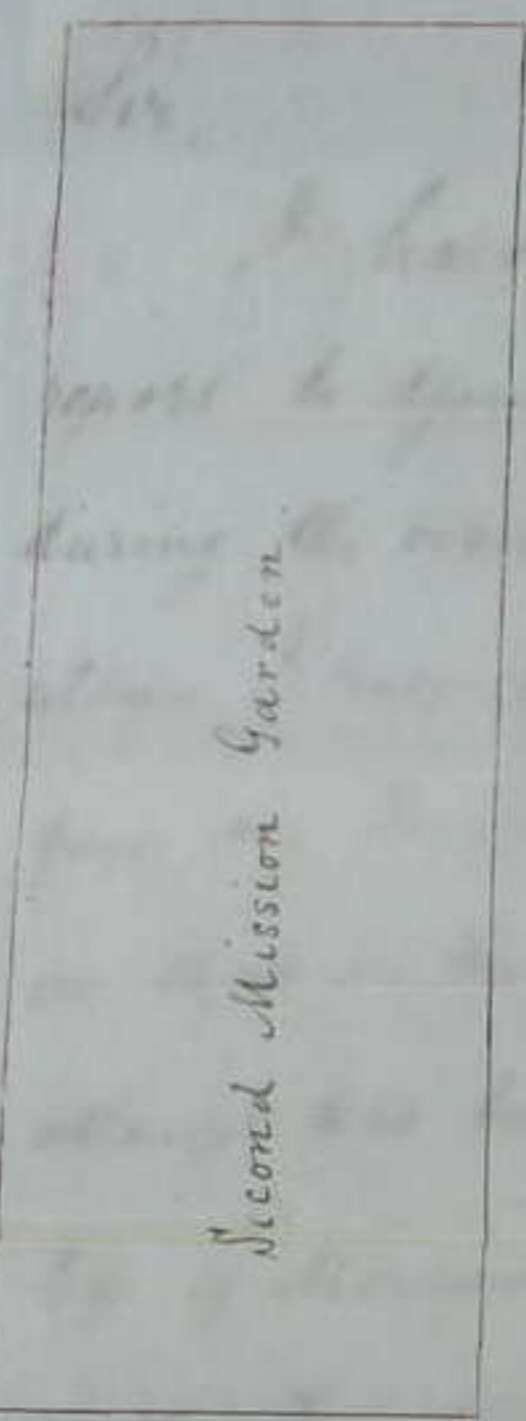
"Abdullah" is 25 yards  
 Hospital, & the Hospital  
 106 yards from the

Believe me &c.  
 (signed) J. R. Longley Hall

1139

West

Moslem Grave Yard



Road

C.M.S. Property

Rm  
 Stable

Moslem Grave Yard

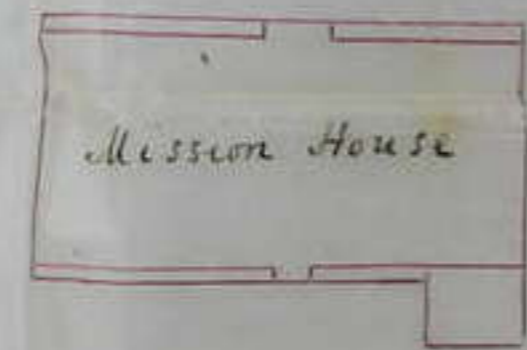
C.M.S. Property  
 at  
 Gaza

North

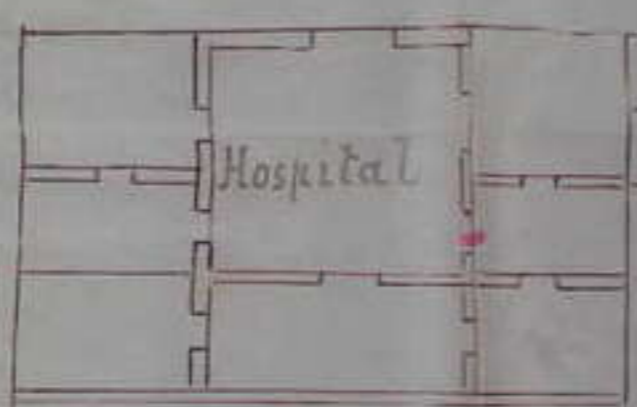
Shakulla's garden & magazine

C.M.S. Property

Garden



C.M.S. Property



Neighbours' Houses

South

128

East

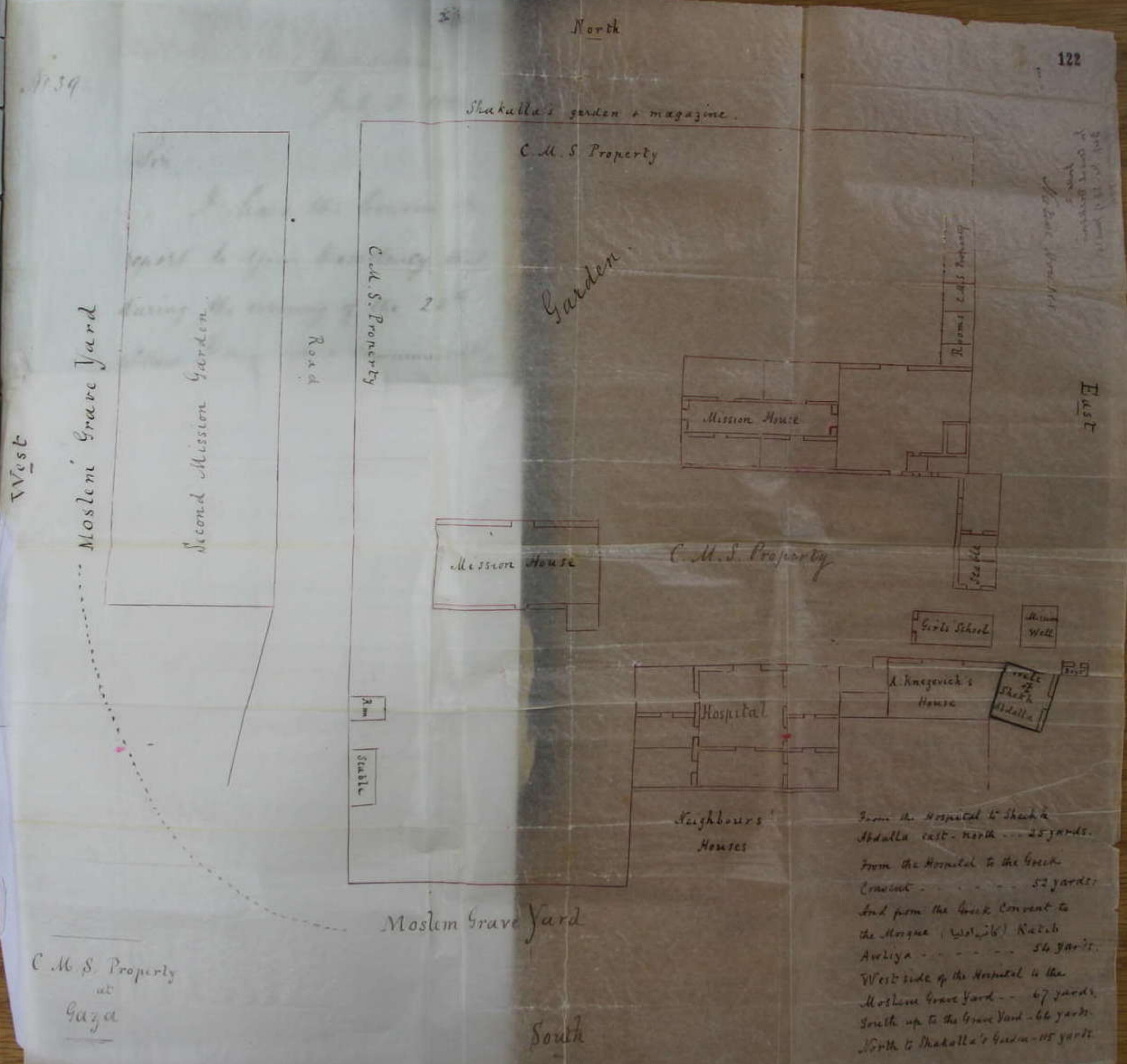
From the Hospital to Sheikh  
 Abdulla east-north - 25 yards.  
 From the Hospital to the Greek  
 Convent - 52 yards.  
 And from the Greek Convent to  
 the Mosque (Wazir) Katali  
 Awliya - 56 yards.  
 West side of the Hospital to the  
 Moslem Grave Yard - 67 yards.  
 South up to the Grave Yard - 66 yards.  
 North to Shakulla's Garden - 115 yards.

Ms. S. property at Gaza.  
 of "Sheikh Abdallah"  
 in ink.

Hospital was started in  
 Rev. J. Howell with six  
 100 patients are seen in  
 every day, and  
 Moslem Pilgrims are  
 from the Mosques.

"Abdallah" is 25 yards  
 Hospital, & the Hospital  
 106 yards from the

Believe me &c.  
 (signed) J. R. Longley Hall



C.M.S. Property  
 at  
 Gaza

From the Hospital to Sheikh  
 Abdallah east-north - 25 yards.  
 From the Hospital to the Greek  
 Convent - 52 yards.  
 And from the Greek Convent to  
 the Mosque (Masjid) Khatib  
 Awliya - 56 yards.  
 West side of the Hospital to the  
 Moslem Grave Yard - 67 yards.  
 South up to the Grave Yard - 66 yards.  
 North to Shakalla's Garden - 115 yards.

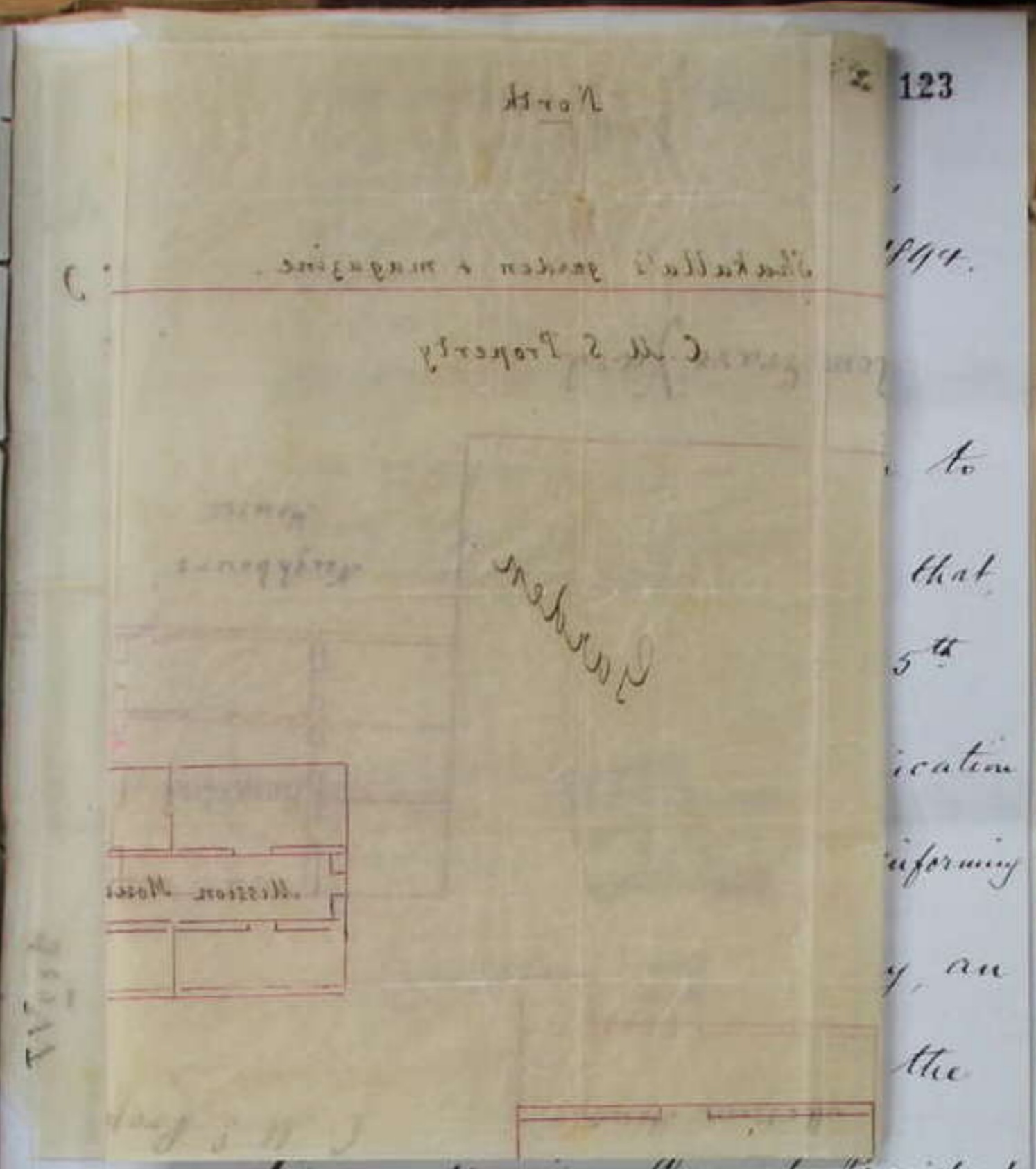
M. S. property at Gaza.  
of Sheikh Abdullah  
in ink.

Hospital was started in  
Rev. J. Howell with six

100 patients are seen in  
sary every day, and  
Moslem Pilgrims are  
from the Mosques.

"Abdullah" is 25 yards  
Hospital, & the Hospital  
106 yards from the

Believe me &c.  
J. R. Longley Hall



life of Monsieur Carnot, President  
of the French Republic; that he

had  
His Excellency  
The Right Hon<sup>ble</sup>  
Sir Philip Currie, G.C.B.  
&c. &c. &c.

to  
that  
5<sup>th</sup>  
ication  
informing  
y, an  
the