

~~ፊት ለፊት ለፊት ለፊት~~

~~ገቢ ለገቢ ለገቢ ለገቢ~~

ዘንገላ ገቢ ለገቢ ለገቢ

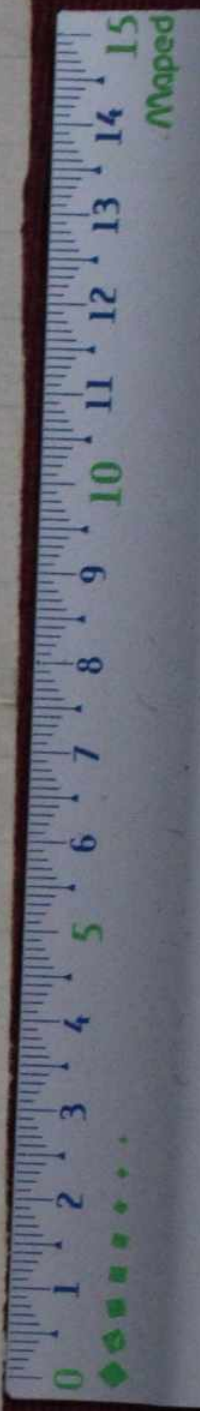
ገቢ ለገቢ ለገቢ ለገቢ

ገቢ ለገቢ ለገቢ

(ገቢ ለገቢ ለገቢ ለገቢ)

ገቢ ለገቢ

~~ገቢ ለገቢ ለገቢ ለገቢ~~



Handwritten text in Cyrillic script, possibly a date or reference number: 1921: 708 P I E O C 4: 4 4 7 0 7 0 4 7 5 1

